

# Insurance for Living Today...

HOME • BUSINESS • FARM • AUTO



Proud Supporters of



## EVENTS SCHEDULE AND SITE MAP



### ELGIN - ST. THOMAS 2010 **INTERNATIONAL PLOWING MATCH**

*St. Thomas, Ontario  
September 21-25, 2010*



Proudly presented by  
**ONTARIO PLOWMEN'S ASSOCIATION  
AND 2010 IPM**

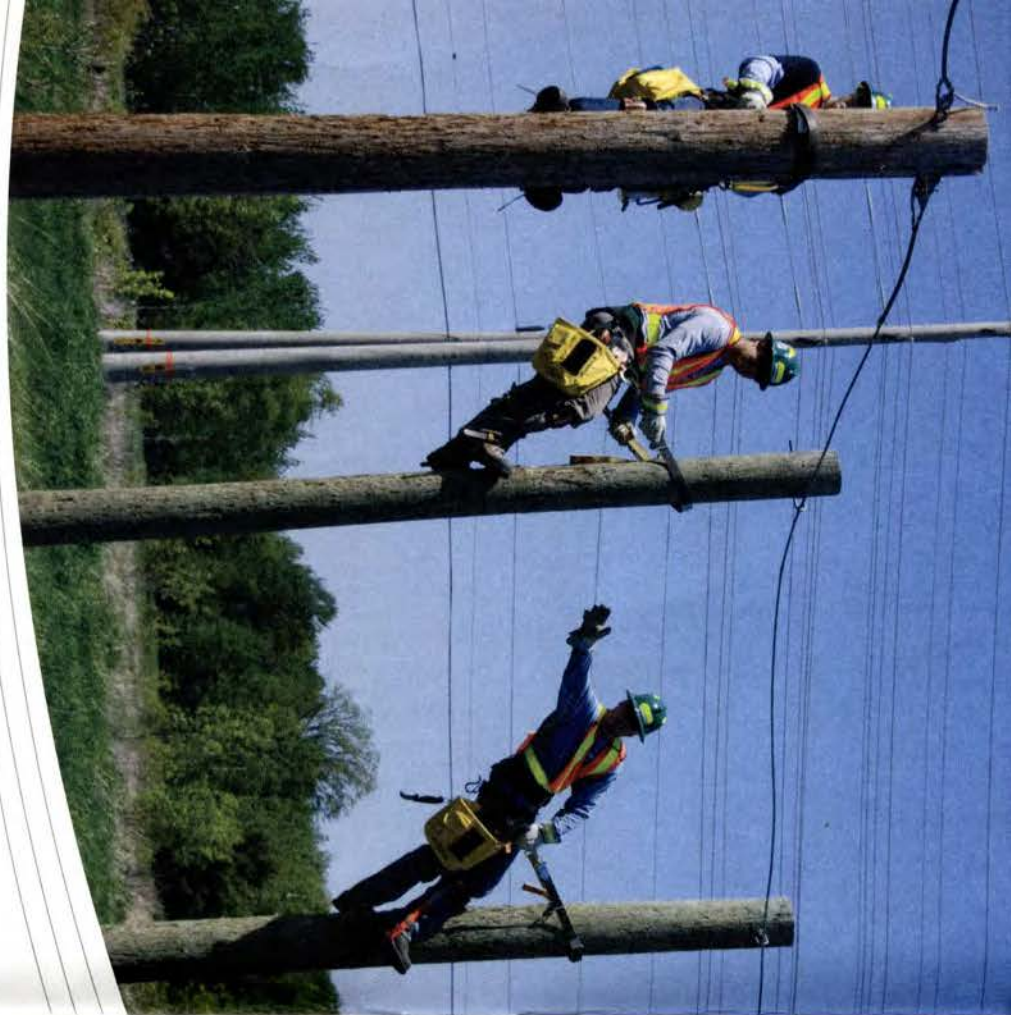


**DAILY PROGRAMS**  
Pages 2 to 6

~ **SITE MAPS** ~  
Pages 7 to 10

**EXHIBITORS LISTING**  
Pages 11 to 16

**Celebrating the Past... Embracing the Future.**



## Working together to provide an electrifying experience

Ontario communities depend on Hydro One to deliver safe, reliable electricity.

The International Plowing Match is no different. Our sponsorship of the IPM not only includes the electricity that keeps lemonade cold and the lights shining bright, but we also build the on site electricity system from the ground up.

In the weeks before the IPM a team of Hydro One's apprentices – under the watchful eye of their mentors and teachers – designs and builds the temporary electricity system that supports all the fun of the IPM.

Our sponsorship not only gives young workers a chance to show off their skills, it teaches them that giving to the community is a part of life at Hydro One.



Partners in Powerful Communities

## SCHEDULE ~ TUESDAY, SEPTEMBER 21

TIME	MAIN STAGE	LOUNGE	MUTUAL	ANTIQUES	LIFESTYLES	COUNTY OF ELGIN	CITY OF ST. THOMAS	RAM TRUCK CORRAL
9:00					Lavender Sense, Wallacetown			
10:00			Goldies Friends	Benny's Junction	Don Mathers		Rogers Cable 13 "Inside Elgin" Set Up and Live Filming (starts at 9:30)	Dog Agility Show (starts at 9:30)
11:00	Opening Ceremonies • Canadian Military Jet will stage a fly over. (starts at 10:30)	Crop Dusters	Tai Chi	Jammin' In The Cabin	Killer Desserts			Performance Horse Spectacular (starts at 10:30)
12:00		Mike Brunelle		Oneida Gospel	Master Gardeners, James Johnson			
1:00			Shenanigans	Tai Chi	Elgin Square and Round Dancers			
2:00		Benny's Junction	Jammin' In The Cabin	OPP Golden Helmet Motorcycle Ride	Fashion Show A Propos, Port Stanley	Goldies Friends	Heather Keating, Artist Painting Onsite (starts at 1:30)	Canadian Cowgirls (starts at 1:30)
3:00	Shenanigans	Don Mathers	Oneida Gospel	Mike Brunelle	Elgin-St. Thomas Public Health, Cathy Nesbitt "Falls Prevention"		Back in Time, Quartet (starts at 2:30)	Carson's Six Horse Hitch (starts at 2:30)
4:00	Benny's Junction				Crop Dusters	Jammin' In The Cabin	John & Carol, Musical Duo (starts at 3:30)	Dog Agility Show

Celebrating the Past, Embracing the Future

**SPECIAL EVENTS:** IPM Farmers Market: Daily; SampleFest: Noon - 5pm daily  
West Coast Lumberjack Show: 11am, 1pm, 3pm daily  
Celebrity Chefs: Daily at 3pm in the VIP tent

**PLOWING SCHEDULE:** Morning start time: 10am  
Afternoon start time: noon  
**VIP Plowing:** 2:30pm (See Info Booth for details)

**RV PARK RESIDENTS ONLY:** MONDAY: Dixon & Company: 7pm  
Jam Session: 9pm  
TUESDAY: Tradition: 7pm, Jam Session: 9pm

### 3 SCHEDULE ~ WEDNESDAY, SEPTEMBER 22

TIME	MAIN STAGE	LOUNGE	MUTUAL	ANTIQUES	LIFESTYLES	COUNTY OF ELGIN	CITY OF ST. THOMAS	RAM TRUCK CORRAL
9:00					Lavender Sense, Wallacetown			
10:00	Al Widmeyer		White Pines	J.P. Allen	Shenanigans	Elgin-St. Thomas EMS CPRS Training	Megan Barber, Singer/ Musician	Dog Agility Show (starts at 9:30)
11:00	Traci Kennedy	Shane Cook	Don Mathers	Dixie Flyers	Heritage Line Herbs, Aylmer	Mike Brunelle	Chef James Meadows, Cooking Demonstration	Performance Horse Spectacular (starts at 10:30)
12:00	Oneida Gospel	Benny's Junction		JD Intro Anniversary	Master Gardeners, Agnes Burroughs		John Milles & Chris Eveland, Musical Duo (starts at 12:30)	
1:00	Stacey Zegers	Shenanigans	Big Band	Al Widmeyer	Bayham Ecumenical Choir	Don Mathers		Canadian Cowgirls (starts at 1:30)
2:00	Dixie Flyers	Jammin' In The Cabin	Mike Brunelle	Traci Kennedy	Fashion Show Durkees Ltd., Aylmer	Benny's Junction	Murray Adlam & Friends, Musical Group (starts at 2:30)	Carson's Six Horse Hitch (starts at 2:30)
3:00	J.P. Allen	Stacey Zegers	White Pines	Shane Cook	Elgin-St. Thomas Public Health			Dog Agility Show
4:00	Oneida Gospel				Benny's Junction	Jammin' In The Cabin		

Celebrating the Past... Embracing the Future

**SPECIAL EVENTS:** IPM Farmers Market: Daily; SampleFest: Noon - 5pm daily  
 West Coast Lumberjack Show: 11am, 1pm, 3pm daily  
 Celebrity Chefs: Daily at 3pm in the VIP tent

**PLOWING SCHEDULE:**  
 Morning start time: 10am, all classes  
 Queen of the Furrow: 2pm (See Info Booth for details)

**RV PARK RESIDENTS ONLY:** Tribute to Patsy Cline: 7pm  
 Queen of the Furrow: 8pm, Square Dancers: 8:30pm  
 Jam Session: 9pm

### 4 SCHEDULE ~ THURSDAY, SEPTEMBER 23

TIME	MAIN STAGE	LOUNGE	MUTUAL	ANTIQUES	LIFESTYLES	COUNTY OF ELGIN	CITY OF ST. THOMAS	RAM TRUCK CORRAL
9:00				Antique Tractor Demonstration				Dog Agility Show
10:00			White Pines		Schotts	Elgin-St. Thomas EMS CPRS Training	Dave Hoy, Singer/ Musician	Performance Horse Spectacular
11:00		Dixie Flyers	Traci Kennedy	Team Farmall Square Dancing Tractors	Bernardin Ltd. Canada	Blackbirds	Chef James Meadows, Cooking Demonstration	
12:00		J.P. Allen		Shane Cook	Master Gardeners, Helen Smith		John Milles & Chris Eveland, Musical Duo (starts at 12:30)	Canadian Cowgirls
1:00		Stacey Zegers	White Pines	Al Widmeyer	Elgin Square and Round Dancers	Slapstix		Dodge Rodeo
2:00	Dixie Flyers	Traci Kennedy	Jammin' In The Cabin	Team Farmall Square Dancing Tractors	Queen of Furrow Contestants	Back Porch (starts at 2:30)	Randy Grey, Singer (starts at 2:30)	Carson's Six Horse Hitch
3:00	Al Widmeyer	Shane Cook	Stacey Zegers		Fashion Show, Winston Fashion, St. Thomas		Toastmaster Speeches & Meeting (starts at 3:30)	Dodge Rodeo continues (starts at 2:30)
4:00	J.P. Allen				Jammin' In The Cabin	Noreen Lanning		

Celebrating the Past... Embracing the Future

**SPECIAL EVENTS:** IPM Farmers Market: Daily; SampleFest: Noon - 5pm daily  
 West Coast Lumberjack Show: 11am, 1pm, 3pm daily, **Celebrity Chefs:** Daily at 3pm in the VIP tent  
 Queen of Furrow Banquet: St. Thomas Airport Hangar, Social: 6pm, Dinner: 7pm. Tickets available at the IPM site office.

**PLOWING SCHEDULE:**  
 Morning start time: 10am  
 Afternoon start time: noon (See Info Booth for details)

**RV PARK RESIDENTS ONLY:**  
 Campfire Country: 7pm  
 Jam Session: 9pm

## SCHEDULE ~ FRIDAY, SEPTEMBER 24

TIME	MAIN STAGE	LOUNGE	MUTUAL	ANTIQUES	LIFESTYLES	COUNTY OF ELGIN	CITY OF ST. THOMAS	RAM TRUCK CORRAL
9:00					Make and Take Project			Dog Agililty Show
10:00	Shane Cook		Stacey Zeger		Schotts	Elgin Square and Round Dancers (starts at 2:30)	Rogers "First Local" Filming (starts at 9:30) Ken Verrell, Author	Performance Horse Spectacular
11:00	Al Widmeyer	Dixie Flyers	White Pines	Team Farmall Square Dancing Tractors	Lotus Thai, St. Thomas	McWilliams Family Band	Chef James Meadows, Cooking Demonstration	
12:00	Benny's Junction	Shane Cook		Shenanigans	Master Gardeners, Brenda Swindell	Historic Photographs from Harvest Memories		Canadian Cowgirls
1:00	Stacey Zegers	Traci Kennedy	Jammin' In The Cabin	J.P. Allen	Bayham Ecumenical Choir		Stevie's Sliders, Musicians (starts at 12:30))	Dodge Rodeo
2:00	Dixie Flyers	Al Widmeyer	White Pines	Team Farmall Square Dancing Tractors	Fashion Show, Understatements and Embellishments Tracy Gordon, Dutton			Carson's Six Horse Hitch
3:00	Traci Kennedy	J.P. Allen	Shenanigans	Antique Tractor Demonstration	Safe Communities Agriculture Safety Presenter: Barry King	Elgin Square and Round Dancers (starts at 2:30)	Steven Jackson, Illusionist (starts at 2:30)	Dodge Rodeo continues (starts at 2:30)
4:00					Benny's Junction	McWilliams Family Band	Trevor Niville, Singer/Musician (starts at 3:30)	

Celebrating the Past... Embracing the Future

**SPECIAL EVENTS:** IPM Farmers Market: Daily; SampleFest: Noon - 5pm daily  
 West Coast Lumberjack Show: 11am, 1pm, 3pm daily  
 Celebrity Chefs: Daily at 3pm in the VIP tent  
 Celebration of Excellence Banquet: St. Thomas Airport Hangar, Social: 6pm, Dinner: 7pm. Tickets available at the IPM site office.

**PLOWING SCHEDULE:**  
 Morning start time: 9am, all classes  
 (See Info Booth for details)

**RV PARK RESIDENTS ONLY:**  
 Lonesome Wind: 7pm  
 Jam Session: 9pm

## SCHEDULE ~ SATURDAY, SEPTEMBER 25

TIME	MAIN STAGE	LOUNGE	MUTUAL	ANTIQUES	LIFESTYLES	COUNTY OF ELGIN	CITY OF ST. THOMAS	RAM TRUCK CORRAL
9:00				Antique Tractor Demonstration	Make and Take Project			Dog Agililty Show
10:00	Fairlanes		White Pines		Schotts	Sahara Swing Band	Steven Jackson, Illusionist	Performance Horse Spectacular
11:00	Jim Chapman	Neon Rain	Jammin' In The Cabin	Team Farmall Square Dancing Tractors	Tall Tales Café, Wallacetown	Studio Dance Pointe (starts at 11:30)	Kari Lynn Winters, Children's Author (starts at 9:30) Parkside Collegiate Institute Cheerleading, Learn how to cheer (starts at 11:30)	
12:00	Benny's Junction	Sheridan Band		Sahara Swing Band	Master Gardeners, Dianne Vaughan		Expressions Dance Studio, Dancers	Canadian Cowgirls
1:00	Jammin' In The Cabin Closing Day Parade		Barber Shop	Fairlanes	Elgin Square and Round Dancers	Elgin's Got Talent!	Jillian Brady, Singer/Musician (starts at 12:30) Lori Holden, Singer (starts at 1:30)	Dodge Rodeo
2:00	Neon Rain	Jim Chapman	White Pines	Team Farmall Square Dancing Tractors	Basket Weaving, Lin McCann, Dutton			Carson's Six Horse Hitch
3:00	Traci Kennedy	Benny's Junction	Sheridan Band		Simdancers Highland Dancers		Country Classics, Singers/Musicians (starts at 2:30)	Dodge Rodeo continues (starts at 2:30)
4:00					Barber Shop			

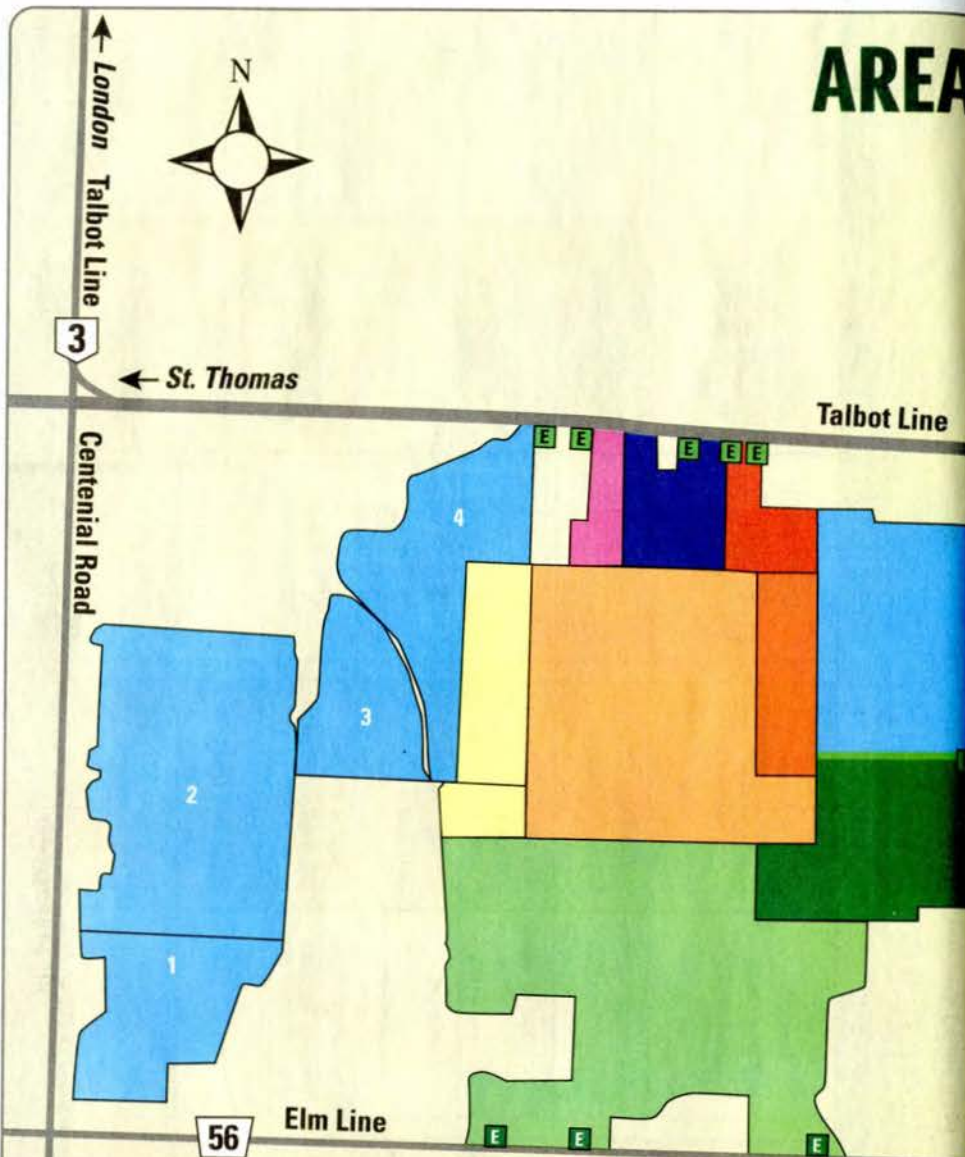
Celebrating the Past... Embracing the Future

**SPECIAL EVENTS:** IPM Farmers Market: Daily  
 SampleFest: Noon - 5pm daily in the Farmers Market  
 West Coast Lumberjack Show: 11am, 1pm, 3pm daily, Celebrity Chefs: Daily at 3pm in the VIP tent



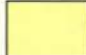
**PLOWING SCHEDULE:** Junior Plowing:  
 Registration at 8 at the Tractor Park  
 Start time: 8:30am (See Info Booth for details)

**RV PARK RESIDENTS ONLY:**  
 Alfalfa Ramblers and  
 Jam Session: 7pm - 10pm

# AREA MAP



## AREA MAP LEGEND

 Tented City	 Antiques	 VIP Plowing
 RV Park	 Tractor Park	 Plowing
 Services	 Bus/Handicapp Parking	 Green Sticker Parking
 Public Parking		



IPM is conveniently located on Hwy. 3, East of St. Thomas - 44099 Talbot Line, St. Thomas, ON N5P 3S7.

# TENTED CITY MAP



Service Area



SERVICE GATE **G5** IPM/OPA Offices

Tuesday, Sept. 21 to Saturday, Sept. 25, 2010

Hours of Operation:

Open Daily 8:30am to 5:00pm

No pets allowed on site • Handicapped accessibility is limited



## ADMISSION RATES

Advance Tickets .....\$15.00  
 Adults .....\$17.00  
 Youth, Ages 6-15 .....\$8.00  
 Under 5 .....FREE  
 School Groups.....\$8.00

ONLY CASH taken for tickets purchased at the gates.

## TENTED CITY MAP KEY

- G** GATES
- ?** INFO BOOTHS
- W** WASHROOMS
- \$** ATM MACHINES
- F** FUTURE IPMs
- +** EMS
- MC** MEDIA CENTRE
- S** SOUVENIRS
- PP** PARTNERSHIP PARK
- WS** WAGON DROP OFF/PICK UP
- AT** AGRICULTURE TENT
- VIP** VIP TENT presented by Grain Farmers of Ontario
- LP** LOST PERSONS sponsored by Home Hardware

- Tentative Map - Subject to Change

# 2010 EXHIBITORS LISTING

**Exhibitors Legend:** N= North • S= South *Eg. H-4 is North Bock 4*

## OUTDOOR EXHIBITORS

1079245 Ontario Ltd- Classic Carts Division  
..... Rodney ..... 4A-37

4-H Ontario..... Guelph ..... N-4

A & A E-Z Brush & Oiler ..... Strathroy ..... 4B-08

A1 Painting..... Walkerton ..... 4B-09

Actv8 Marketing..... London ..... 2A-33

Agriculture Tent ..... 4A-09

Agri-Flame Heating Systems Ltd  
..... Camlachie ..... 1B-09

AGT Electric Cars..... Burlington ..... 3B-04

All Canadian..... St. Thomas ..... 4A-04

Alpaca Ontario Inc..... Hastings ..... 4B-23

Andrews Sports..... St. Thomas ..... 5A-36

Andre's Furnace Sales & Service  
..... Moosecreek ..... 2B-37

Animol Fashion Inc..... Scarborough ..... 2A-19-20

Argo (Ontario Drive & Gear Ltd)  
..... New Hamburg ..... 5A-31-33

Automotive Equipment Solutions  
..... St. Anns ..... 4A-34

Autumn Olive Log & Timber..... Dutton ..... 2B-39

B & L Family Clothing Inc..... Aylmer ..... 2B-04

Bath Fitter..... London ..... 1B-41

Bath Solutions of Ontario's West Coast  
..... Gorrie ..... 1B-37

Bayside Whitstable Sales Inc... Barrie ..... 2A-21

Beef & Dairy Tent..... S-5

Bell's Machining Welding & Hydraulics  
..... Perth ..... 6A-40-41

Bennett Golf Cars..... Stouffville ..... 5B-15-16

Bernard Enterprises..... Brussels ..... 1B-24

Berry Hill Limited..... St. Thomas ..... 2A-35

Blue Water Trailers..... Watford ..... N-4

**BMO Bank of Montreal..... 3A-22**

Boutique New Fashion . Stornoway, QC ..... 2B-07

Brushy's Nokian Footwear Powassan ..... 2A-36

Brussels Agri Services Ltd .. Brussels ..... 4B-19-20

Buck's Boilers & Stoves..... Vanessa ..... 2B-40

Campout RV..... Stratford ..... 3A-05-08

Canada Power Technology Ltd  
..... Mississauga ..... 6A-34-35

Carl Noble Barn Painting Ltd.. Hanover ..... 4A-05

Carmix Canada Limited..... Val Caron ..... 6A-07

Carol Ann's Crafts..... St. Thomas ..... 1B-20

Carson's Farms & Auctions .. Listowel ..... N-2

Castaway Fence Ltd..... Mossley ..... 4B-04

CDL Inc (Les equipments d'erabliere CDL inc)  
..... St. Lazare - De-Bellechasse, QC ..... 5B-34

CEF Ontario (Child Evangelism Fellowship  
of Ontario)..... Brantford ..... 2B-06

Cell X Plus..... Kitchener ..... 2B-05

**CFCO..... Chatham . 3B-26-27**

Chainsaw Sculptures..... Mount Forest ..... 5B-39

**City of St. Thomas..... S-4**

Commercial Tent..... S-1

Complete Turf Equipment..... Petrolia ..... 1B-08

Contact Welding Supplies Ltd.. London ..... 5B-17

Coping Bereavement Support Groups of  
Ontario Inc..... Cambridge ..... 2A-17

**Country 101..... Tillsonburg . 6A-24-26**

Country Aerial Photography Kenilworth ..... 3B-24

Country Air & Repair..... Moorefield ..... 5A-08

Country Corners Rent-All Inc .. Exeter ..... 4B-31-34

Country Farm Seeds Ltd..... Blenheim ..... 4A-06-07

Country Heat Inc..... Bothwell ..... 5B-09

**County of Elgin..... S-3**

Crown North America..... Oakville ..... 4A-41

Crowsfoot Timberframing & Construciton Co  
..... Cambridge ..... 4A-25

Custom Motorsports..... Arkona ..... 5A-34

D & D Meats..... Alliston ..... 2A-28

Dairy Farmers of Ontario..... 4A-27-30

Danielle Daigle..... Valleyfield, QC ..... 2A-18

Danshers..... Brigden ..... 2A-03

Davis Forestry Ltd..... Campbellford ..... 5B-40

Davon Sales Inc..... Woodstock ..... 4B-01-03

De Dell Seeds..... London ..... 4B-10

Dewdad Inc..... Scarborough ..... 2A-29-30

DFK Equipment Inc..... St. Mary's ..... S-6

Disbrowe Chevrolet Buick GM Cadillac Ltd  
..... St. Thomas ..... 3A-15-16

**Dodge..... N-1**

**Dowler-Karn Ltd..... London . 6A-27-30**

**Eastlink..... 3B-11-12**

ECHO Power Equipment (Canada). London. .... 5B-36-37

Elgin Realty Limited..... St. Thomas ..... 3A-24

Elgin Stewardship Council..... Aylmer ..... 1A-10-14

Emergency Services..... 2B-03

**Family Flowers..... St. Thomas . 3B-13-14**

Farmers Feed Cities..... Guelph ..... 3B-21

Father & Sons Geothermal Energy Solutions  
..... Leamington ..... 1B-21-22

Fellowship of Christian Farmers - Canada  
..... Hawkesbury ..... 2A-08-09

Ferguson RV World..... St. Thomas ..... 3B-08

Fire Prevention..... Elgin County ..... 1A-09

Firetech..... St. Thomas ..... 1B-38

Fish Farm Supply Co..... Elmira ..... 1B-06

Frank Battaglia Enterprises Limited  
..... Campbellcroft. 2A-31:5A-03

Furnishings Plus..... Brantford ..... 2B-43-44

Future IPM's..... 3A-38-40

G.A. Machinery Sales..... Wellesley ..... 5B-22

General Seed Co..... Alberton ..... 4A-26

**Giant Tiger..... 3B-17**

Glen Craven Candy & Nut Shoppe  
..... Cambridge ..... 1B-12

Gospel Focus..... Oil Springs ..... 2A-04

Gospel Text Mission..... London ..... 2A-22

GR Distributors Inc .. Salmon Arm, BC ..... 2A-38

**Grain Farmers of Ontario..... 6A-21-22**

Grainstoves Inc..... Blyth ..... 1B-29-30

Great Lakes New Holland Inc . Mitchell ..... S-6

Green Grid Solutions..... Waterloo ..... 2B-38

Green Valley Heating..... Granton ..... 1B-39

H. Broer Equipment Sales & Service Inc  
..... Aylmer ..... 5A-26-27

Hakmet..... Quebec ..... N-5

Harco Ag Equipment Harriston ..... 5A-28-30

Haugh Equipment..... Brucefield ..... 6A-31

Haugholm Books..... Brucefield ..... 6A-32

Highway 511 Heating Solutions... Perth ..... 1B-34

**Home Hardware..... 3A-27-30**

Honda Canada..... Markham ..... 4B-35-36

Hully Gully..... London ..... 5A-39-40

Huron Tractor Ltd..... St. Thomas ..... 5A-15-18

Huron Med-E-UX Ltd..... Osgoode ..... 1B-33

Husqvarna Canada Corp .. Lachute, QC ..... 5B-41-44

**Hydro One..... N-4**

Hydro One Education Centre..... 1A-01-08

IPM Presbytery of London Hospitality Tent  
..... St. Thomas ..... 2A-37

JB Wilson & Son Well Drilling Ltd  
..... Springfield ..... 6A-03-04

JBD Sales & Service..... Coldwater ..... N-3

JF Stoll North America..... Fort Erie ..... S-6

J and J Rooflines & Renos..... Aylmer ..... 2B-36

Jolley Farm Toys..... Brucefield ..... 6A-33

Karcher Professional Wash Systems  
..... Tavistock ..... 1B-40

Karl & Terry Upton Services Eagle Lake ..... 2A-39

Kaycee Crafts..... St. Thomas ..... 2B-25

Kettle Creek Conservation Authority  
..... St. Thomas ..... 1A-15-18

Kiotti Tractor..... Thorndale ..... 5B-01-03

Knapp Department Store Ltd.. Listowel ..... 2A-40

Knapp's Farm Service Inc .. Wardsville ..... 5B-04-06

Knights of Columbus Father Doyle  
..... Kenilworth ..... 3B-25

Kowality Pole & Flag Co..... Delhi ..... 2A-34

Landini/McCormick..... Bradford ..... 5B-18-19

Le Magasin du Cowboy  
..... St. Dominique de Rosaire, QC ..... 2A-24

Leslie Hawken & Son..... Markdale ..... 4B-24-25

Liberal Caucus Service Bureau Toronto ..... 3B-22

Line-X Coatings - London..... London ..... 4A-33

Lions Club of St. Thomas... St. Thomas ..... 3A-21

Lockington Homes Inc..... London ..... 1B-42

Lost Persons..... 3B-31

Lormac..... London ..... 1B-27

Lucan Biddulph Recreation Committee  
..... Lucan ..... 3B-05

Luck/now Products..... Lucknow ..... 5A-04-05

M.A. Sylvester Magnetic .. Tecumseh ..... 2B-11

M.J.M. Bhatti..... Brampton  
..... 2A-01-02: 2B-30: 4B-07

Main Stage/Bleachers..... 3B-32-38

Marcrest Manufacturing Inc..... Ethel ..... 5A-20-21

Martin's Lift Truck Service..... Aylmer ..... 6A-05

Masonic Information Booth.. St. Thomas. .... 3A-11-14

MediChair London..... London ..... 1B-32

Megadome/Harnois Industries Inc  
..... St. Thomas, QC ..... 4B-21

Metal Roof Outlet..... Courtland ..... 1B-23

Millroad Manufacturing..... Brucefield ..... 3B-07

Mobility Independence..... London ..... 2B-12

Mugford Shoes..... St. Thomas ..... 2B-28

Multi Shelter Solutions..... Palmerston ..... 4A-01-02

Mystic Mountain Earth Wares  
..... Dover Centre ..... 2B-26

Naturally Rugged..... Cambridge ..... 2B-29

Nestor & Cathie's Sombreros . Oshawa ..... 2B-08

New Mac MFG..... Woodstock ..... 1B-43-44

Next Energy..... Elmira ..... 3B-19-20

Niagarassage..... Markham ..... 2A-16

North American Solar Solutions  
..... Clarksburg ..... 1B-36

Northern Ontario Distributors . Windsor ..... 2A-06

Norwood Industries..... Kilworthy ..... 6A-38-39

OFSC District Five..... St. Mary's ..... 4B-37

**OLG..... 3B-18**

Olympia Fabric Structures ... Lucknow ..... 4B-26-27

Ontario Federation of Agriculture  
..... Guelph ..... 4B-12-14

Ontario Federation of Anglers & Hunters  
..... Peterborough ..... 2A-12

Ontario Flag & Pole..... Sutton ..... 3A-04

Ontario Ministry of Agriculture, Food & Rural  
Affairs (OMAFRA)..... Guelph ..... 4B-15-18

**Ontario Modular Homes..... S-2**

# 2010 EXHIBITORS LISTING

Ontario Mutual Insurance Associations... 4A-15-20	SMG Champion Sawmill ..... Ancienne-Lorette, QC ... 5B-35
Ontario PC Party ..... Toronto ... 3A-18	Smyth Welding and Machine Shop Ltd ..... Auburn ... 5A-22-23
<b>Ontario Plowmen's Association Headquarters</b> ..... Guelph . 6A-15-20	Somerville Seedlings ..... Everett ... 1B-10
Ontario Provincial Police ..... N-3	Sommers Motor Generator Sales Ltd ..... Tavistock . 4A-21-22
Ontario Tire Stewardship ..... Toronto ... 4B-38	Souvenir Tent ..... 3A-31-33
Oregon Distribution Ltd ..... Guelph ... 5B-38	St. Thomas Elgin General Hospital Foundation ..... St. Thomas ... 3A-23
<b>Partnership Park</b> ..... 3A-34-37	<b>St. Thomas Ford</b> ..... <b>St. Thomas</b> . 4A-42-44
Pat & Molly's Flags of the World . Carlisle ..... 1B-05	Steel Tile Company ..... Innisfil ... 3A-41
Penta TMR Inc ..... Petrolia . 5A-09-10	<b>Steelway</b> ..... 6A-11-14
Peterbilt of Ontario ..... London ... 6A-01	Stihl Limited ..... London . 6A-42-44
Podolinsky Equipment Ltd & Fullline Farm & Garden Equipment Ltd ..... Petrolia . 4B-39-40	Stratford Trailer Sales and Rentals ..... Sebringville .... 3B-06
Polar Magic Inc ..... Cornwall ... 2B-23	Swish Maintenance Limited ..... Peterborough ... 3A-26
Popcorn Plus ..... Edmonton, AB ... 3B-23	TD Canada Trust ..... St. Thomas ... 3A-25
Power Source Canada Ltd ..... Oakville . 5A-24-25	<b>The Co-operators</b> ..... <b>London</b> , 3A-01-03
Pro Fleet Care ..... Princeton ... 4A-40	The Fuel Genie ..... Markdale ... 4B-41
Pro-Fab Empyre ..... Arborg, MB ... 1B-35	<b>The London Free Press</b> ..... <b>London</b> ... 3A-17
Proline Group ..... Coldwater ... 5A-35	The Orthotic Works ..... Acton ... 2B-42
Quality Homes ..... Kenilworth . 1B-15-19	The RAM TRUCK Corral ..... N-1
RAJ Enterprises ..... Scarborough ... 2B-19	The Septic Store ..... Osgoode ... 1B-07
Redex Industries Inc ..... Salem, Ohio ... 2A-23	Tirecraft - Aylmer Tire ..... Aylmer ... 6A-02
Reformed Evangelistic Outreach. Union ... 2B-20	Tommy White's Source For Sports ..... St. Thomas ... 3A-10
Rekha Enterprises/Ranka Enterprises ..... Markham . 2B-13-14	Topline Distributing ..... Thamesford ... 2B-34
Renewable Energies Canada ..... Dorchester . 3B-09-10	Trampoline Country Inc ... Mt. Brydges ... 2B-22
Retro Festive Sales Inc ..... Oakville ... 2B-21	Ultimate Suzuki of London ..... London . 5A-37-38
Ritchie Bros Auctioneers . Burnaby, BC . 5B-07-08	Uplook Ministries ..... St. Thomas . 2B-09-10
Road Boss Grader ..... Rosetown, SK ... 6A-09	Urban Wear ..... Bolton ... 2B-24
Robert H. Laning & Sons Limited ..... Waterford . 5B-23-24	Vandenbrink Farm Equipment Inc Sparta . 5B-25-30
<b>Rodney Building &amp; Metal Products</b> ..... <b>Rodney</b> ... 6A-23	Vandenburg Equipment Service. Harley ... 5A-11
Rooftop Solar Developments . Teeswater ... 4A-08	VIP Tent ..... 3B-39-41
Routed Signs ..... Lowbanks ... 1B-28	V-Bins.com ..... Aylmer . 5B-20-21
R-Safety ..... St. Thomas . 4A-23-24	Via Trailers Mt. Brydges . Mt. Brydges ... 3A-09
Rural Life Styles ..... 1A-23-30	Voth Sales & Services Inc/Voth Truck Bodies ..... Eden . 4A-35-36
Runa Pacha International Native Art & Craft ..... Ottawa ... 2A-10	Wagler Mini Barns ..... Aylmer . 3A-19-20
Rural Living Tent ..... 1A-31-36	Wagon Snagger Inc ..... Dorchester ... 5A-19
Rural Living Tent/Commercial Tent ..... 1A-37-43	Walco Equipment ..... Ltd Elmira . 5A-12-14
Sandy Ridge Livestock Supplies & Kiefer Trailer Sales ..... West Lorne ... 4A-03	Wallenstein (E.M.B. MFG). St. Clements . 5A-06-07
Saturn Power Inc ..... New Hamburg ... 2B-35	Wally's Work World ..... Cambridge ... 2A-32
Sazaal Enterprises ..... Markham ... 2A-07	Ward Distributors/Rawleigh Products ..... Dorchester ... 2A-05
Sew Special Embroidery ..... Belwood ... 2B-27	Weberlana MFG (1990) Co ... Listowel . 5B-10-11
Shiva Fashion Inc ..... Scarborough . 1B-04: 2A-15	Wellmaster Pipe & Supply . Tillsonburg ... 6A-10
<b>Silverthorn Landscaping</b> ..... <b>1B-13-14</b>	West Coast Lumber Jacks ..... N-6
Skelter Sales Service ..... St. Thomas ... 2A-11	Wiltsie Truck Bodies Ltd ..... Aylmer ... 6A-06

Wise Line Metal Sales Inc ..... Aylmer ... 6A-08	Ontario Cattlemens' Association ..... Guelph
Wood Master of Ontario (Jack Sales & Service) . Burk's Falls . 1B-25-26	Ontario Limousin Association ..... Meaford
Wood-Mizer Canada ..... Manilla . 6A-36-37	
Yamaha Toronto ..... N-5	
Yamaha Canada Toronto ..... 5A-41-44	
Zimmer Air Services Inc ..... Blenheim ... 3A-08	

## INDOOR EXHIBITORS

### AGRICULTURE TENT

Allied Tax & Financial Group ..... London	Casey's Creative Kitchens ..... St. Thomas
Bartels Environmental Services Inc ..... Ancaster	Certified Labs ..... Brampton
Beacon Home Improvements ..... London	Crows Construction ..... Thamesville
<b>Better Farming</b> ..... Iona Station	Derek Pickering ..... Iona Station
Canadian Food Inspection Agency ..... Guelph	Dewdad Inc ..... Scarborough
<b>Cargill</b> ..... St. Thomas	Edward Jones Investments ..... St. Thomas
Christian Farmers of Ontario ..... Guelph	Elgin Audiology Consultants' Hearing Clinic ..... St. Thomas
Elgin County Farm Safety Council ..... St. Thomas	Evergreen Power Ltd ..... Lindsay
Energuy West Ltd ..... London	Funkitz.com ..... Grand Bend
Farm Business Consultants ..... London	Investors Group Financial Services ... Cambridge
<b>Graham Scott Enns LLP</b> ..... <b>Aylmer</b>	Investors Group Financial Services Inc ... London
HJV Equipment ..... Hensall	JSC Factory Direct ..... North York
K-W Fuel Injection Ltd ..... Waterloo	Krown Corporate ..... Schomberg
Ontario Farmer Publications ..... London	Legge Fitness Stores & Clinics Ltd ..... Listowel
Ontario Petroleum Institute ..... London	Little Giant Ladders ..... Delta
Ontario Soil & Crop Improvement Association ..... Guelph	M. Natural Health & Beauty ..... Saskatoon, SK
Operating Engineers Training Institute of Ont ..... Morrisburg	Mary Kay Cosmetics ..... West Lorne
<b>Petro - Canada</b> ..... <b>London</b>	Mazza Heating & Air Conditioning ..... Aylmer
PQI Canada Ltd ..... Brantford	Ministry of Transportation ..... London
R & D Energy Solutions Inc ..... Blenheim	Pacesetter Massaging Insoles .... Saskatoon, SK
RS 2000 Tax Consultants Inc ..... Komoka	Pathfinder Lubricants ..... Coe Hill
<b>Scotiabank</b> ..... Toronto	Plasma Innovation Cookware ..... Toronto
Small Farm Canada ..... Victoria, BC	<b>Rogers Communications</b> ..... Ile-Perrot, QC
Solar Alternative Technology Corporation. Toronto	Secur-Vision Distributing ..... Windsor
Statistics Canada Census of Agriculture .. Ottawa	Softub Canada ..... Sudbury
Stratford Agri Analysis ..... Stratford	St. Thomas Elginaires Barbershop Chorus . Fingal
Superior Propane ..... Grimsby	<b>The Yarmouth Fire Insurance Co.</b> ..... <b>St. Thomas</b>
Threads of Life ..... London	Titanium Exclusive Cookware ..... Toronto
Tractor House ..... Lincoln, Nebraska	Unidem Sales Inc ..... Oshawa
University of Guelph, Ridgetown Campus . Ridgetown	Virelec Ltd / Sundial Solar ..... Mississauga
Vanrooy Mills & Associates ..... Paris	VON Canada - Ontario Branch ..... London

### BEEF AND DAIRY TENT

CMG Building Solutions Inc ..... Wingham	AKKO Ltd. Cement Finishers ..... Strathroy
Eastern Canadian Galloway Association. Puslinch	BT Naturals Inc ..... Victoria, BC
Gencor ..... Guelph	Canadian Snowbird Association ..... Toronto
Ontario Angus Association ..... Fergus	Cleave Energy Inc ..... Picton
Ontario Blonde d'Aquitaine Association . Jerseyville	Custom Rock Creations ..... London

### COMMERCIAL TENT

A & M Home Products ..... Exeter	AAAFAC - Financial Guarantee Programs Division ..... Winnipeg, MB
Advanced Basement Systems ..... Chatham	Apple Auto Glass ..... Mississauga
Caressant Care Nursing & Retirement Homes Ltd ..... Woodstock	
Casey's Creative Kitchens ..... St. Thomas	
Certified Labs ..... Brampton	
Crows Construction ..... Thamesville	
Derek Pickering ..... Iona Station	
Dewdad Inc ..... Scarborough	
Edward Jones Investments ..... St. Thomas	
Elgin Audiology Consultants' Hearing Clinic ..... St. Thomas	
Evergreen Power Ltd ..... Lindsay	
Funkitz.com ..... Grand Bend	
Investors Group Financial Services ... Cambridge	
Investors Group Financial Services Inc ... London	
JSC Factory Direct ..... North York	
Krown Corporate ..... Schomberg	
Legge Fitness Stores & Clinics Ltd ..... Listowel	
Little Giant Ladders ..... Delta	
M. Natural Health & Beauty ..... Saskatoon, SK	
Mary Kay Cosmetics ..... West Lorne	
Mazza Heating & Air Conditioning ..... Aylmer	
Ministry of Transportation ..... London	
Pacesetter Massaging Insoles .... Saskatoon, SK	
Pathfinder Lubricants ..... Coe Hill	
Plasma Innovation Cookware ..... Toronto	
<b>Rogers Communications</b> ..... Ile-Perrot, QC	
Secur-Vision Distributing ..... Windsor	
Softub Canada ..... Sudbury	
St. Thomas Elginaires Barbershop Chorus . Fingal	
<b>The Yarmouth Fire Insurance Co.</b> ..... <b>St. Thomas</b>	
Titanium Exclusive Cookware ..... Toronto	
Unidem Sales Inc ..... Oshawa	
Virelec Ltd / Sundial Solar ..... Mississauga	
VON Canada - Ontario Branch ..... London	

### COMMERCIAL/RURAL LIVING TENT

AKKO Ltd. Cement Finishers ..... Strathroy	BT Naturals Inc ..... Victoria, BC
Canadian Snowbird Association ..... Toronto	Cleave Energy Inc ..... Picton
Custom Rock Creations ..... London	



# 2010 EXHIBITORS LISTING

Debt Freedom ..... London  
 Dundee Wealth Management ..... St. Thomas  
 E-Learning Ontario, Ministry of Education... Toronto  
 Elgin County Farm Safety ..... St. Thomas  
 Faithlife Financial ..... Waterloo  
 Forest Lawn Memorial ..... London  
 Four Seasons Sunrooms ..... London  
 Frequency Wave Inc. .... Waterloo  
 Good Shepherd Lutheran Church ..... London  
 Interlock Industries ..... Mississauga  
 Investors Group Financial ..... London  
 Lahman Precast Concrete Inc. .... St. Clements  
 Lake Erie Solar ..... Union  
 Long Point Lodge ..... Elk Lake  
 Magic Magnets ..... McGregor  
 Mannatech Inc. .... London  
 Metcalfe Gardens Retirement Residence . St. Thomas  
 North Star Windows & Doors ..... St. Thomas  
 Ontario Drainage Superintendents ..... Strathroy  
 Ontario Racing Commission ..... Toronto  
 Osteoporosis Canada ..... London  
 PLS Insoles ..... Milton  
 Select Holidays ..... Innisfail, AB  
 Shin Bio Canada Inc ..... Mississauga  
 Smokey Mountain Chew Canada ..... Calgary, AB  
 Solrcon/Creative Enterprises ..... Aylmer  
 Studs For Your Duds ..... Grand Bend  
 Talbot Trail Physiotherapy ..... St. Thomas  
 The Canadian Racing Pigeon ..... Tillsonburg  
 The Gideons International in Canada ..... Guelph  
 The Salvation Army ..... London  
 Tom Boy Tools ..... Carp  
 Tortoise Shell Cottage Co. Ltd. .... London  
 Treat Yourself Wellness Centre ..... Sarnia  
 Unidem Sales ..... Oshawa  
 USC Education Savings Plans Inc ..... London

## RURAL LIVING TENT

**Bell Canada** .....  
 Centennial Windows Ltd ..... London  
 Confederation Log Homes of London..... Aylmer  
 CRU Solutions Inc ..... Ingersoll  
 Culligan ..... London  
 Dewdad Inc ..... Scarborough  
 Egg Farmers of Ontario ..... Mississauga  
 Elgin Pure Water Inc ..... St. Thomas  
 Family & Children's Service of St. Thomas-Elgin  
 ..... St. Thomas  
**Foodland c/o Sobey's Inc** .....  
 Government of Canada Rural Exhibits Program  
 ..... Ottawa

**Harrowsmith** .....  
 Hy-Grade Roofing ..... Guelph  
 JFK Home Improvements ..... Aylmer  
**Libro** ..... **St. Thomas**  
 London Eco-Roof Manufacturing Inc ..... London  
 Meal Time Stoves ..... Stratford  
 Middlesex Hospital Alliance - Diabetes Education  
 Centre ..... Strathroy  
 National Farmers Union ..... Denfield  
 Natural Resources Canada ..... Sault Ste. Marie  
 New Steel Roofers ..... Hamilton  
 On Track Door Systems ..... Ariss  
 Powerhouse Solar Ltd ..... Stratford  
 R.W. Thomas Inc. .... Union  
 Rite Way Building Products Inc ..... London  
**Rogers Communications** .....  
 Steve Peters, MPP .....  
 Sunset Savings Canada ..... Toronto  
 Superior Steel Roofing Systems Inc ..... Guelph  
 The Engery Store Inc ..... Toronto  
 The Foot Correctors IPC Orthotics ..... Windsor  
 Town of Ingersoll/Intech Clean Energy Inc  
 ..... Ingersoll  
 Treasure Chest Distributors ..... Saskatoon, SK

## FOOD VENDORS

Catholic Women's League of Canada  
 ..... Wallacetown. .... 3B-02  
 Chatham Burgers ..... Chatham. .... 2B-17  
 Cora's Fast Foods ..... Ottawa. .... 4B-42-44  
 Cy Kelly's Lanes & Lounge ..... Aylmer. .... 2A-25  
 Debbie's Fast Foods ..... Ottawa. .... 5A-01-02  
 Di's Fries ..... London. .... 2B-02  
 Domino's Pizza ..... London. .... 2B-15-16  
 Duffer's Chip Wagon ..... Plainfield  
 ..... 2A-13-14; 3A-43-44; 4B-29-30  
 Grandpa Shantz's Homemade Ice Cream  
 ..... Wellesley. .... 3B-03  
 Grill King ..... Arthur. .... 5B-12  
 Guy Duchesne Cook House Inc L'Original . 5B-31-33  
 Harrison's Ice Cream Ltd ..... Oakville. .... 1B-02  
 Hope United Church ..... Alvinston. .... 4B-05  
 Joe's Lunch ..... Innerkip. .... 2B-31-32  
 K.I.S. Enterprises ..... Eden. .... 2B-33  
 Knights of Columbus ..... West Lorne. .... 3B-01  
 Lazenby Investments Limited. . Wellesley. .... 4B-28  
 Lemon Heaven ..... Utopia. .... 3B-28  
 Ma n' Pa's Kettle Corn ..... Kincardine. .... 2A-26

**McDonalds'** .....  
 Metcalfe Food & Beverage Inc . Petersburg. .... 2A-42-44  
 Nana's Kettle Corn ..... Sudbury. .... 1B-03  
 Nancy's Old Fashioned BBQ. . Gatineau. .... 2B-01  
 Norpac Beef Events Team ..... Norwich. .... 3B-29-30  
 Old Fashioned Fudge Inc ..... Perth. 1B-01: N-4  
 Old Fashioned Lemonade ..... Ottawa. 1B-31: 3B-42  
 Ontario Corn Fed Beef ..... Woodstock. .... 1A-22  
 Rotary Club of St. Thomas . St. Thomas. .... 3B-15-16  
 St. George Lions Club ..... St. George. .... 4A-31  
 St. Thomas Community Christian School &  
 Immanuel Christian School . St. Thomas. .... 3B-43  
 Summer Fun Funnel Cakes / Caroda's Best  
 Fajitas ..... Belmont. .... 4A-32  
 The Candy Counter Inc. .... Paris. .... 4A-38-39  
 The Port Stanley Wharf Restaurant  
 ..... Port Stanley. .... 3B-44  
 The Poutine Machine ..... Belmont. .... 2A-27  
 Wayne Vary Chip Wagon ..... London. .... 5B-13  
 What's Cookin' ..... Wellesley. .... 5B-14

## ARTISANS & QUILTS

A Slice of the North ..... Matachewan  
 Accessorize it / Jewellous ..... St. Thomas  
 Alpaca Breeder's Collective ..... Guelph  
 Angela Lloyd-Briggs Studio ..... Ilderton  
 Bonnie Doone Glass ..... Forest  
 Cameron's Country Crafts ..... Brampton  
 Country Candles & Gifts ..... Elmira  
 Country Patchwork Fabrics & Quilts .... Woodstock  
 Crafty Cupboard ..... Aylmer  
 Creative Glass by Bob Short ..... Owen Sound  
 Dog and Pony Productions Ltd ..... St. Thomas  
 Doodlebug Candles ..... St. Thomas  
 Edible Options and Gary Boyle . . Kitchener/London  
 Folk Arte ..... Milton  
 From the Meadow ..... Belmont  
 Homestead Stitches ..... North Bay  
 Ironworks Design ..... Windsor  
 Jaboli II ..... Fergus  
 Karen Gunna Leather ..... Toronto  
 KLW Enterprises ..... Buckthorn  
 Lucien Gagnon's Reclamation ..... Puslinch  
 Magnetic Jewelry by Bluefront ..... Essex  
 Margaret Spence/Kathy Wood ..... Tillsonburg  
 Meddle with Metal ..... Aylmer  
 Natures' Creations ..... Niagara-on-the-Lake  
 Perfect Pillow ..... Kanata

Smell the Soap ..... Sarnia  
 Stampin' Up! ..... Dover Centre  
 The Healing Bath ..... Stratford  
 The Painted Image ..... Toronto  
 The Wright Sparkle ..... London  
 Village Crier Gallery & Frame Shop. .... Dutton

## ELGIN COUNTY SHOWCASE

### COMMUNITY TENT

Alzheimer's Society of Elgin-St.Thomas  
 Animal Aide of St. Thomas-Elgin  
 Big Brothers/Big Sisters of St. Thomas-Elgin  
 Canadian Cancer Society Elgin-Middlesex Unit  
 Canadian Diabetes Association  
 Canadian Foodgrains Bank  
 Elgin County Archives  
 Elgin County Library  
 Elgin Employment Services  
 Elgin Square and Round Dancing  
 Elgin-St. Thomas Public Health  
 Fanshawe College St. Thomas/Elgin Campus  
 Farm Town Canada  
 Jabez Therapy Ranch  
 Pearce Williams Christian Center  
 Scouts Canada  
 St. Thomas Curling Club  
 The Arthritis Society-Southwest Region  
 United Way of St. Thomas-Elgin

### PROGRESSIVE TENT

Belmont Lagoon  
 Elgin Business Resource Center  
 Elgin Innovation Center  
 Erie Shores Wind Farm  
 Ferguson Bros. Of St. Thomas Ltd.  
 GreenLane  
 IGCP Ethanol Inc.  
 International Erosion Control Systems

### ELGIN OFFERINGS TENT (TOURISM TENT)

Malahide Township  
 Municipality of Bayham  
 Municipality of Central Elgin  
 Municipality of Dutton/Dunwich  
 Municipality of West Elgin  
 Town of Aylmer

# THANK YOU TO OUR PARTNERS

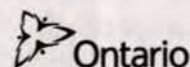
## HOSTING PARTNERS



## PRESENTING PARTNERS



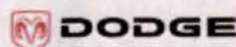
## PLATINUM PARTNERS



## GOLD PARTNERS



## SILVER PARTNERS



Walters Farms Inc.

## BRONZE PARTNERS



The London Free Press



Elgin Federation of Agriculture



Ryckman Contractors

Dog & Pony Productions

## FRIENDS OF THE MATCH

Cowan Insurance  
(Frank Cowan Company Limited)  
Dutton Building Products / Rona  
Elgin County Plowmen's Association  
Elgin Services Employment Agency  
Ferguson Bros. of St. Thomas Ltd.  
Ferguson RV World  
Gorman-Rupp of Canada Ltd.  
Great Lakes New Holland Inc.  
Harrowsmith Magazine  
Locke's Auto Body

London Agricultural Commodities Inc.  
London Husky Travel Centre  
McDonald's Restaurants of Canada  
McFarlan Rowlands Insurance  
Mike Bloetjes  
Ontario Modular Homes  
Summit Food Service Distributors  
Sylvite Agri-Services  
The Lake Erie Beacon  
Wendy's Restaurant  
Wiseline Metal Sales Inc.

## THANK YOU TO ALL PARTICIPATING PARTNERS INCLUDING:

Match Supporters, Match Contributors,  
Match Fans and Grass roots

For more information please contact:  
1-866-976-2010 • 519-631-1234  
office@ipm2010.com • www.ipm2010.com

